

alles wird gut

Lucia Bernini & Jonas Heller



So Sihlquai originally used to serve as a sort of supply line, connecting enterprises resident on this street. Its function was primarily infrastructural, However, both the municipal as well as cantonal authorities have been fantasising about the future of Kreis 5, resulting in one great vision: Sihlquai's destiny is to become a *Bildungsmeile*.

These plans have already started to become visible: The centralisation of various departments of Zurich's *Berufsschulen* into these grey-white volumes with flat façades, spacious public buildings unwilling to compromise. This implies: *Ersatzneubau* – demolition and new construction at some point in the future, creating a vacuum that gives rise to uncertainties, provoked by the wish for major transformation.





In this backyard, we can discover an important message:

Le monde est à nous – The world belongs to us!

Whoever is meant by 'us' remains unsaid – anybody can feel addressed: the four carpenters of *Kollektivwerk*, the mechanics of the motorcycle workshop, industrial designer Sebastian Marbacher, the feminist strike collective, the children dance school or the community of *Autonome Schule Zürich*.

Presumably, 'us' means people and institutions that neither have huge financial resources nor great political power at their disposal. They work and exist in the present, they give shape and colour to the everyday. Their lives revolve around the spaces of the city in which only few people other than themselves believe in: Former production facilities and *Arbeiterbaracken*, the spaces in between, overgrown gardens and backyards.

They claim these spaces with the limited means of interim use.

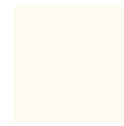


By moving through the city with eyes and ears wide open, one will come across a surprising amount and variety of materials that might come in handy sometime.

For example, you can ask for leftover paint at a house painter's workshop. Usually they have plenty of unfinished cans after a completed job or they order samples they won't use anyway.

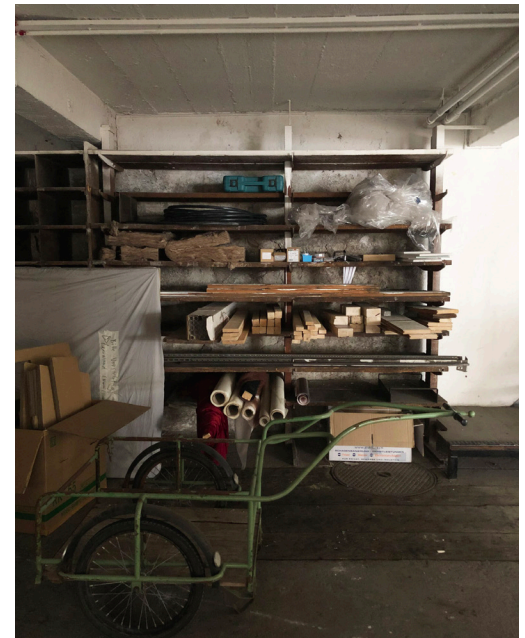
One can of paint will be enough for approximately seven square metres. By mixing similar tones of colour, you get the possibility to multiply seven square metres by the number of cans with similar shades of colour.

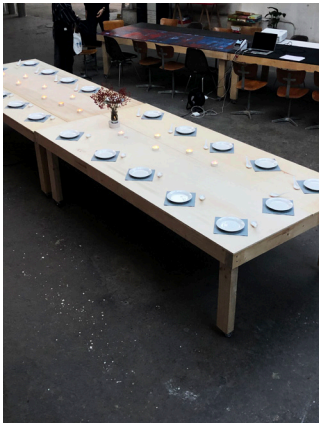
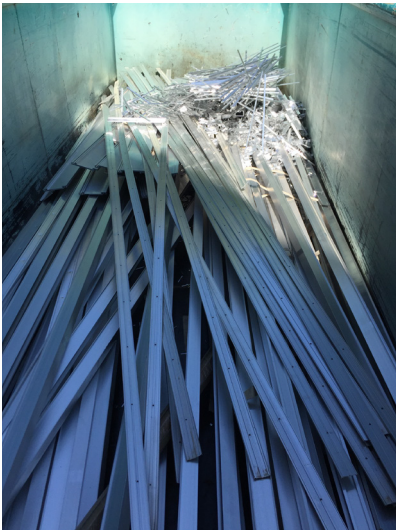
You can go about collecting materials in a similar way by getting in touch with metal workshops or carpentries. Leftover pieces of material usually end up being thrown out, even though they might still be utilised for various uses.



Material Inventory

item no	material type	dimensions	qty	location	purpose
AS-010.01	Boxsack	1600 x 40 mm	1	ASZ Keller, Sihlquai 125	space to move
CA-001.01	Glasdach	4000 x 3000 x 1500 mm	1	Carrosserie Oerlikon, Schaffhauserstrasse 307	space to grow
CA-001.02	Glasdach	7000 x 3000 x 1500 mm	2	Carrosserie Oerlikon, Schaffhauserstrasse 307	space to grow
CA-001.03	Glasdach	10000 x 3000 x 1500 mm	2	Carrosserie Oerlikon, Schaffhauserstrasse 307	space to grow
CA-001.04	Glasdach	6000 x 3000 x 1500 mm	1	Carrosserie Oerlikon, Schaffhauserstrasse 307	space to grow
CA-002.01	Vierkanlleiste	1200 x 50 x 15 mm	9	Carrosserie Oerlikon, Schaffhauserstrasse 307	-
CA-002.02	Vierkanlleiste	1000 x 50 x 15 mm	4	Carrosserie Oerlikon, Schaffhauserstrasse 307	-
CA-002.03	Vierkanlleiste	900 x 50 x 15 mm	2	Carrosserie Oerlikon, Schaffhauserstrasse 307	-
CA-002.04	Vierkanlleiste	800 x 50 x 50 mm	8	Carrosserie Oerlikon, Schaffhauserstrasse 307	-
CA-002.05	Vierkanlleiste	800 x 60 x 40 mm	1	Carrosserie Oerlikon, Schaffhauserstrasse 307	-
CA-003.01	Gipsplatte	2500 x 1250 x 10 mm	7	Carrosserie Oerlikon, Schaffhauserstrasse 307	-
CA-003.02	Gipsplatte	2500 x 1130 x 10 mm	18	Carrosserie Oerlikon, Schaffhauserstrasse 307	-
CA-004.01	Schrauben	var.		Carrosserie Oerlikon, Schaffhauserstrasse 307	-
CA-005.01	Stoff dunkelrot	2 x 14 m	1	Carrosserie Oerlikon, Schaffhauserstrasse 307	space to move
CA-006.01	Ateliertisch	250 x 125 x 75 cm	20	Carrosserie Oerlikon, Schaffhauserstrasse 307	space to nourish
CA-006.02	Ateliertisch	250 x 125 x 85 cm	1	Carrosserie Oerlikon, Schaffhauserstrasse 307	-
CA-007.01	Metall-Falлтüren	70 x 220 cm	14	Carrosserie Oerlikon, Schaffhauserstrasse 307	-
CE-001.01	Obstkisten	600 x 400 x 300 mm	40	Centro3000, anonym	-







Storage space is always a scarce resource, there is never enough of it. Once a certain amount of material has been accumulated, it is convenient to store it as closely as possible to the site of its future utilisation. Sebastian Marbacher is an expert in installing informal depots for his material in the surroundings of his studio. He gave away his tactics:

‘The labyrinthine in between spaces of the Sihlquai buildings are full of nooks and crannies, offering safe storage space as they are not visible to the inexperienced eye. Having already been at the site when it was one of the various locations of ZHdK, I knew all these secret hiding places when Raumbörse became my landlord. We made an agreement: They allowed me to use the space below the loading ramp in the courtyard for storage. In return, I had to mount wooden panels to close off the space beneath the ramp and do a weekly clean-up of the surrounding area. Voll geil! We have made similar agreements and even other users have started making this kind of arrangements in the collective interest.’



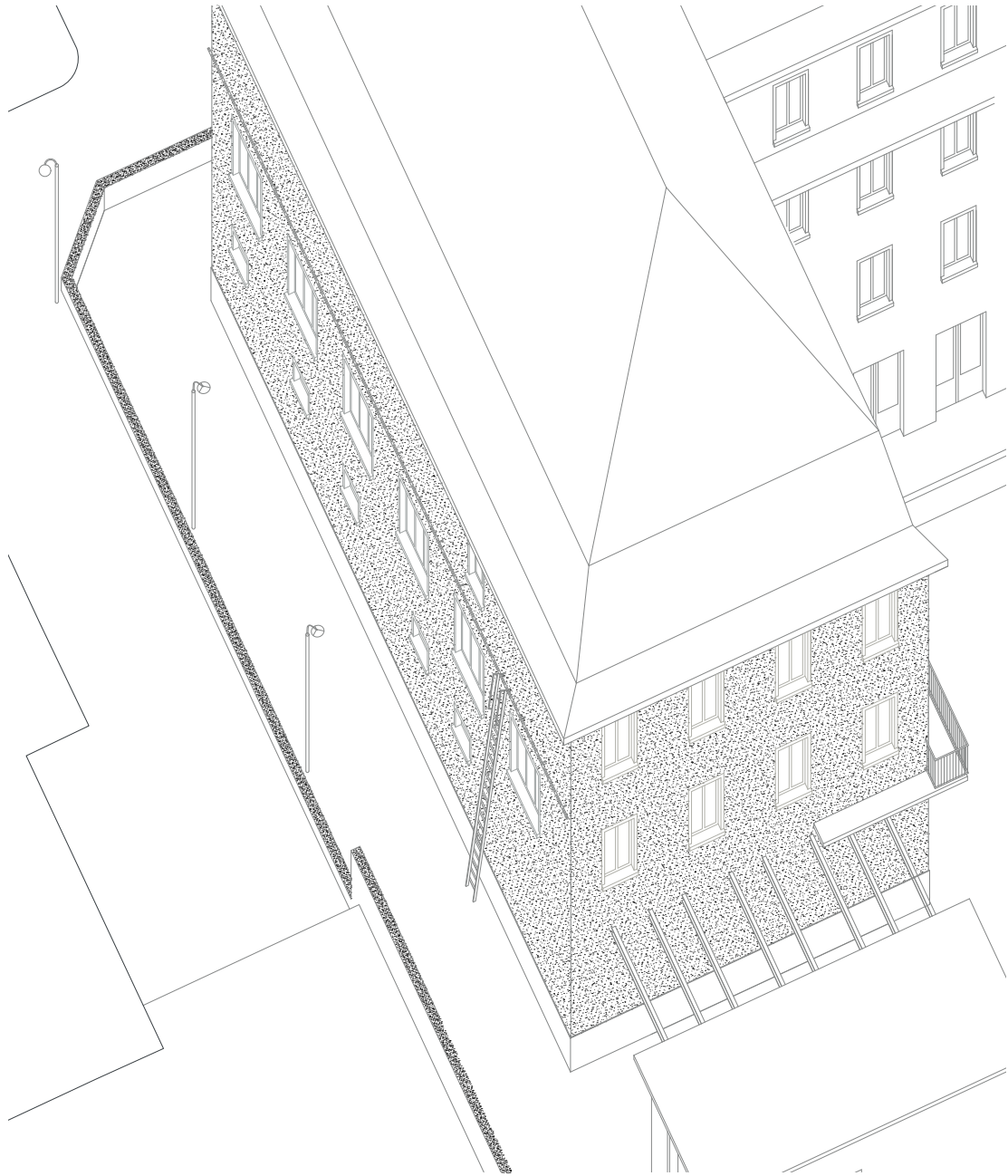


Here, we see a situation of the front façade facing the street. Obviously the carpenters of Kollektivwerk put the wood beams there only temporarily and this image to us is kind of a symbol for the sharing of material. Nevertheless, this tells us something about the way the community here works. Due to the scarcity of space, one is not only forced to expand to the exterior, but also to share resources such as construction material, tools, machines, and so on. This is why the members of the three carpentries based on Sihlquai often move up and down this street, going to other workshops to borrow a tool or use a machine they do not own themselves.





Now we return to the backyard where we are once more reaffirmed that the world belongs to us. In the meantime, the space has been the object of a few alterations: Two garage doors have been removed, linking the yards and improving the accessibility of the premises. This way, the back façade is reinforced in its subtle function to record the dreams of city dwellers and users. A ladder was added that obviously aids people to put up their message on higher parts of the façade.

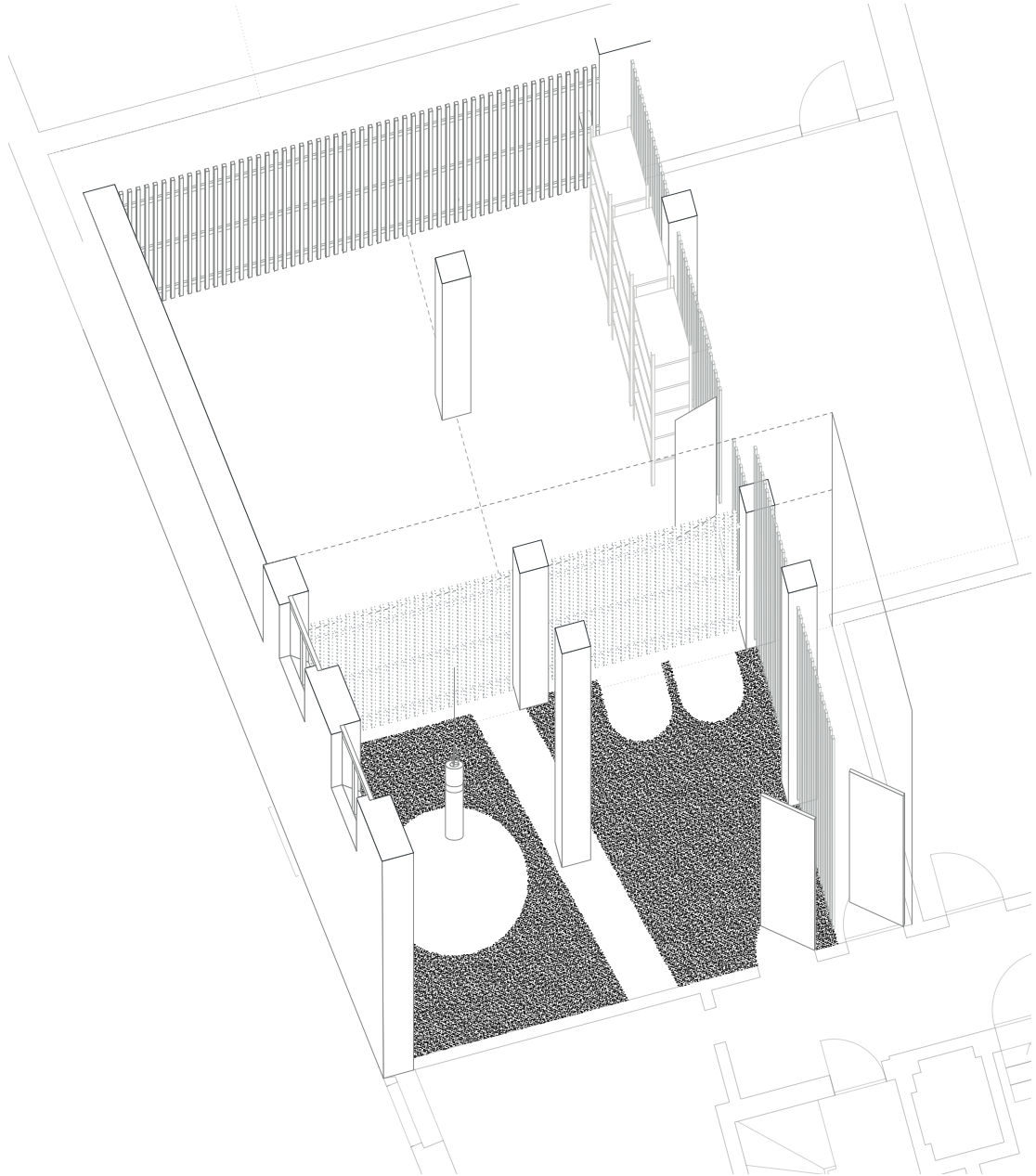


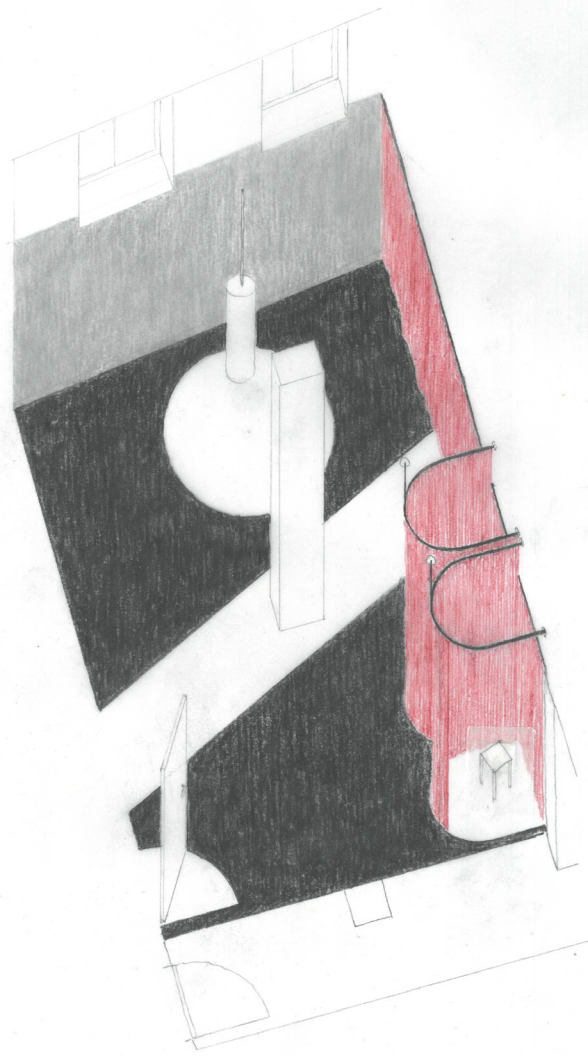




Through a window can peak into a basement space that had been primarily used for storage by three different tenants. It was neither officially assigned to them nor very densely used.

A few hours of work have left the space open for a new use: A space to move – inspired by a long-time wish of the ASZ – equipped with a punching bag, a weight bench and some weights. The curtain was found somewhere and hung below the concrete beam to make the space more atmospheric, along with the mirroring walls and the floor that were painted black – you're already familiar with the way we got hold of the paint...





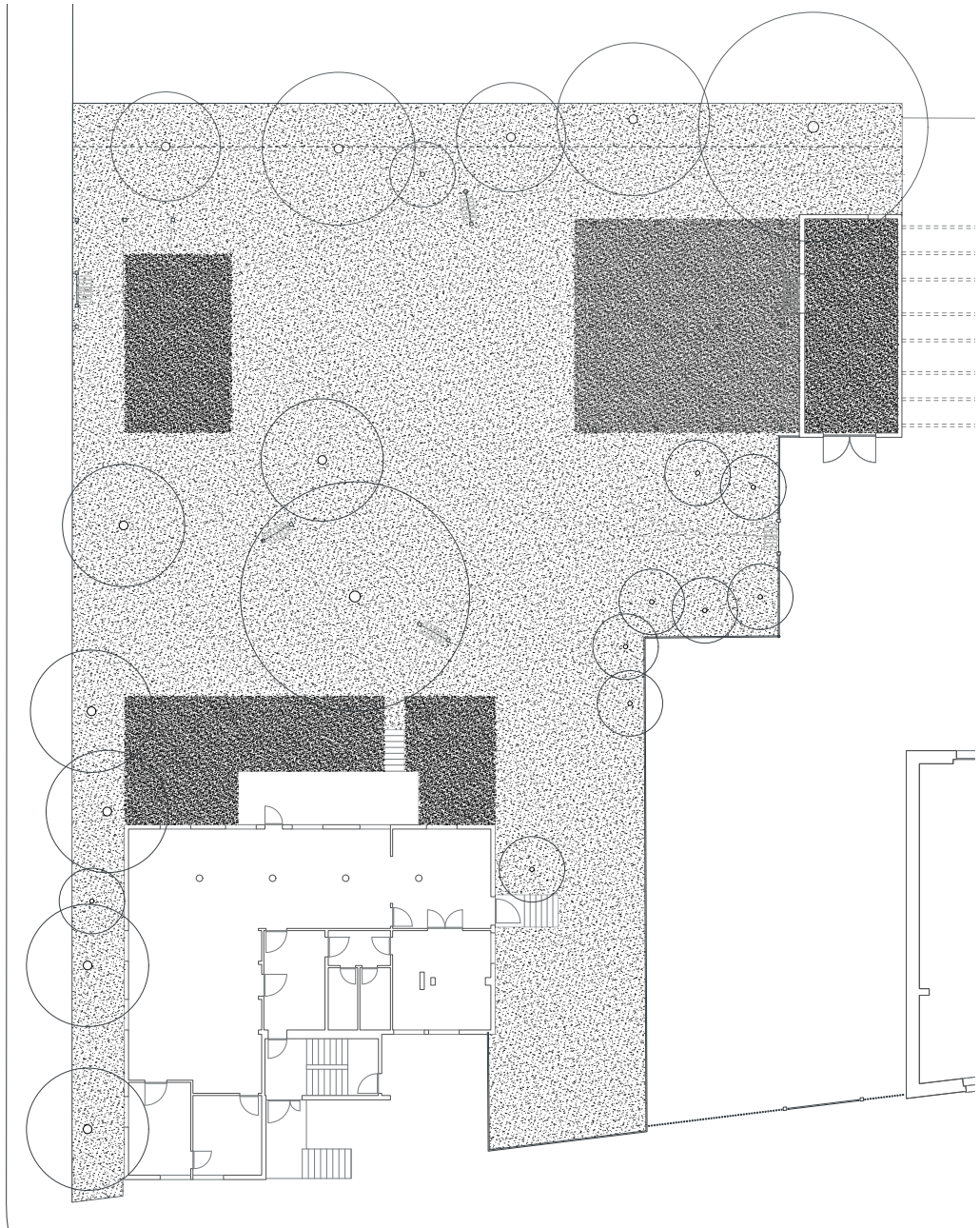


Now we are standing in the garden. It used to be the private garden of the *Streikhaus* and has now been made accessible for the whole community.

Merely one new opening had to be created in the fence between the garden and the courtyard by simply dividing the wires with regular cutting pliers. A new metal gate was set up and a few hedges had to give way to the new passage. There are various zones in the garden differing in their degrees of intimacy. These zones are marked by newly installed gates.

This wooden structure is an addition that increases the variety of the different zones in the garden. The beams of the structure are studded with hooks on which pieces of fabric can be hung up in various ways and thereby creating partition walls or coverings that provide protection from the sun or, to a certain degree, from rain.

Along with other tools and gardening material, the fabric is stored in the adjacent shed. The ground area below the structure is covered with cement tiles, it is a robust surface that can be occupied both for gardening or some sort of handiwork as well as for social gatherings.







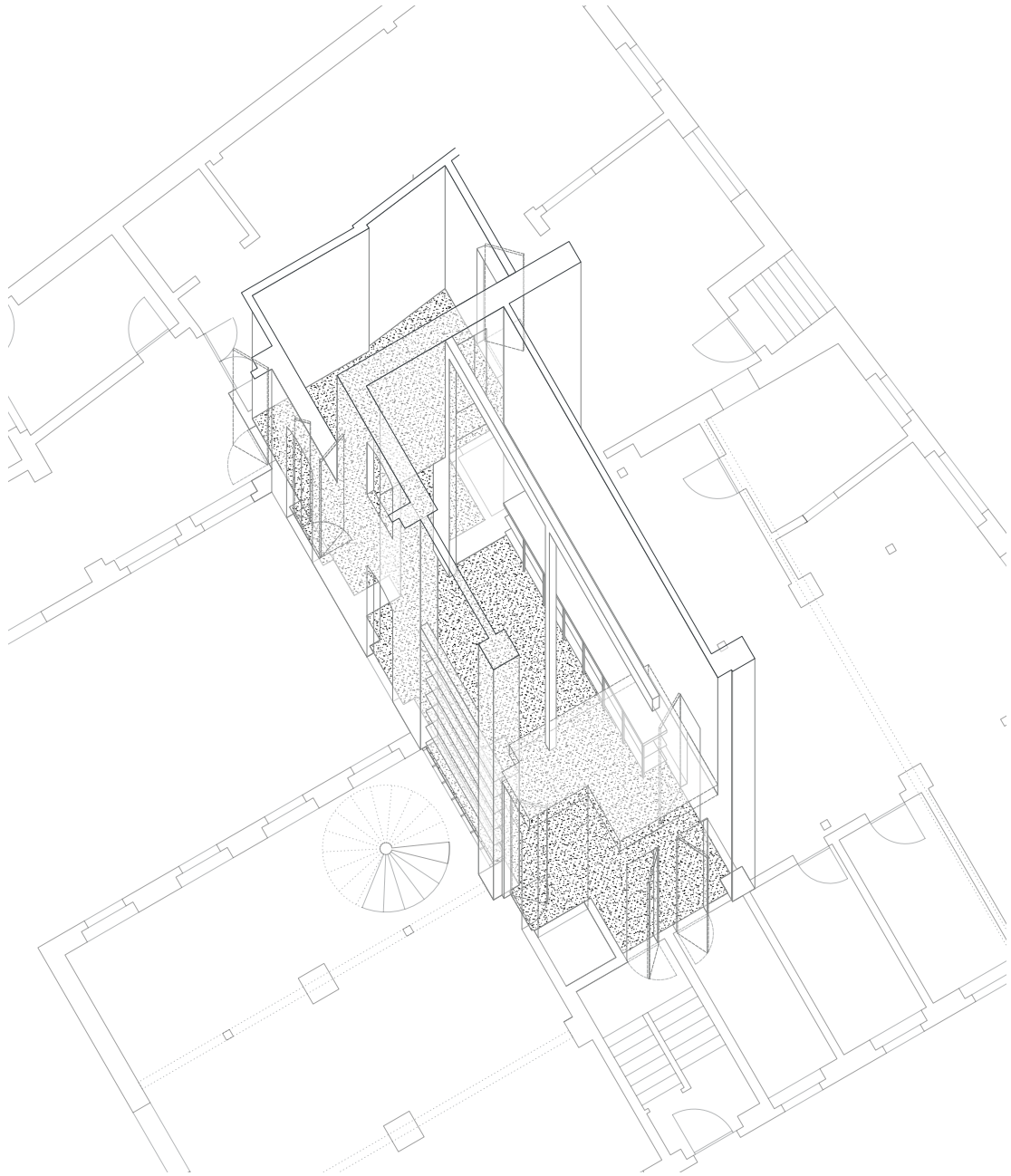
Here we are in the courtyard of the building where the ASZ is located. During the summer, boxing and weightlifting might be more appealing when done in the open. For this, even less work is necessary than it was the case in the basement space.

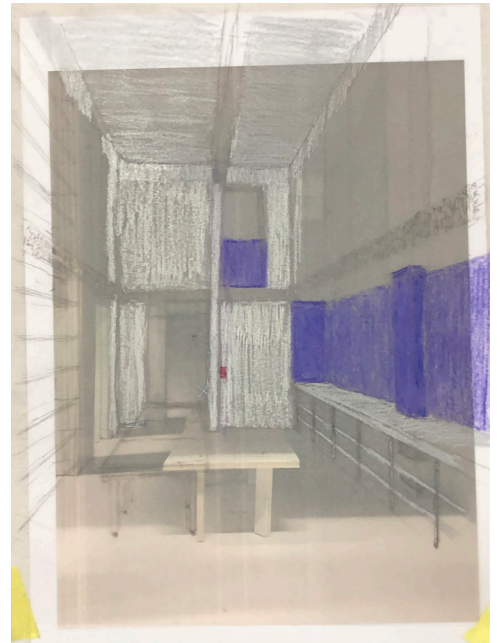
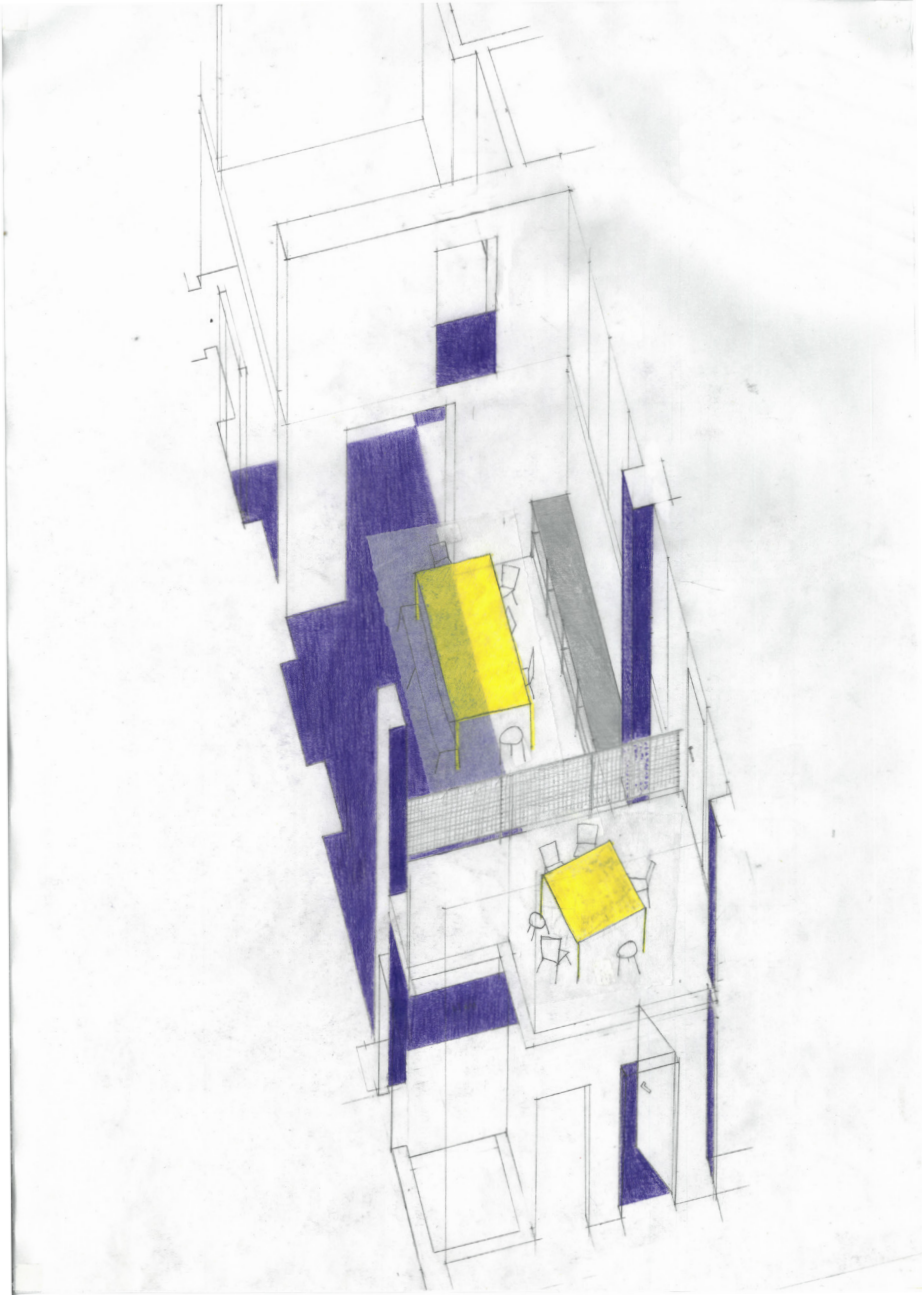
In front of the unused garage door, two sturdy metal doors have been installed, creating a small space in this niche where the training equipment can be stored. There is a hook for mounting the punching bag below this strange unusable balcony that gives the mikro gym some shade.





We move to the other building the former location of the 'community salon' of Impact Hub, where their declared mission of promoting the exchange between entrepreneurs, creatives and techies used to take place physically everyday. Anyway, now not only these people but also some walls and parts of the ceiling have given way to this space in order to give justice to its name of a 'co-working space'. It is no longer used by paying costumers of Impact Hub, but by the tenants of the Sihlquai houses. A big kitchen was installed where everybody can cook their meals. Maybe a collective practice could evolve from this, so various tenants have a space to meet and get in touch.







During the course of this semester, we have met various people who inhabit Sihlquai. Our concern is not the future, vaguely outlined by conflicting interests. Instead, we focussed on the present and the people who are on the site now. We learned about their ways of appropriating the spaces and adapting them according to their needs and wishes. We tried to adopt this practice and implement their knowledge and intuitions into our interventions. These changes can make everyday life a little bit lighter, a little bit more playful and enjoyable. They are signs of hope that for once, the promise of *'Alles wird gut'* will be kept.